

Global Burden of Animal Diseases

J. Rushton,

W. Gilbert, K.M. McIntyre, G. Chaters, J. Taylor, E. Massay Kallon and B. Huntington

j.rushton@liverpool.ac.uk

The challenges we face in animal health

- Greater demand for food
- Increasing pressure on use of land, water and air
- Increased connectivity and movement across our livestock sectors
- Greater awareness of impacts of livestock on the environment and public health
- Limited awareness of the importance and value of animals in society
- Pressures on budgets to the veterinary services



Producers who have incomplete information and insufficient access to animal health services and technologies





Consumers who demand safe food grown to high welfare standards



BSE

Drove changes in regulations on feeding practices
Decades-long impact on British

CSF

Large outbreaks in Europe each cost €1-2 billion and economic effects

SARS

Emergence attributed to consumption of exotic/wild animals

H5N1

Shock to global economy and food supply (poultry sector, feed suppliers,

Ebola

Disruption of local food supply
Driven partly by increased



Zika

Commercial farming practices may have contributed to outbreak in

COVID-19

Necessary containment methods threaten global food supply and

Managing the emergence and re-emergence of diseases in people and animals



Outbreaks in South America, then Europe

Endemic in LMICs, causing economic losses for farmers

FMD



to infection with strains of commensal bacteria in pigs that severely sicken farmers

S. suis



economic losses due to panic and misinformation

H1N1

pathogen that persists in wild boars, leading to difficulties in control

CSF

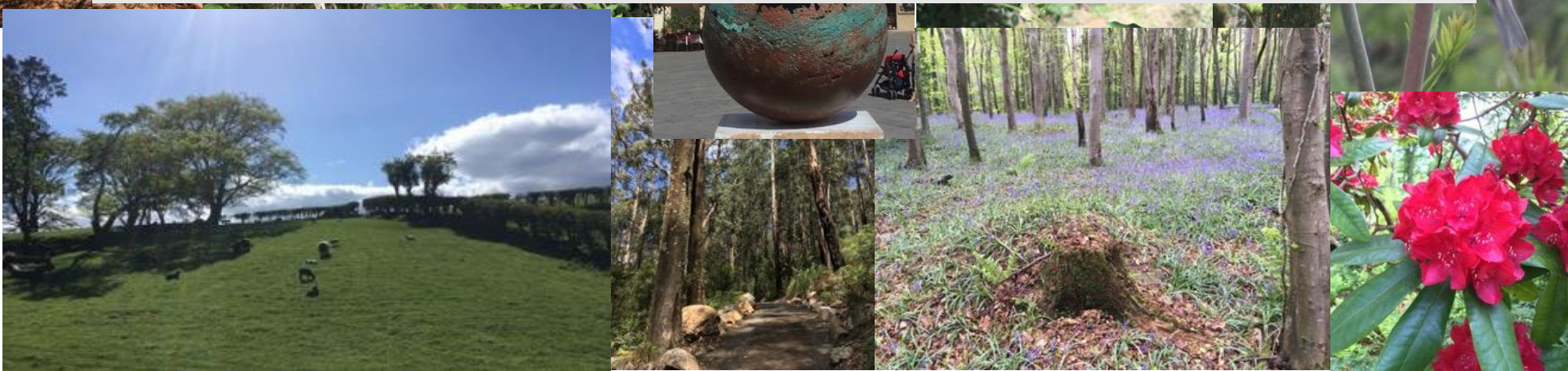
supply due to concentration of industry in Asia

ASF

Adapted from G T Patterson et al 2020



Improving the management of the environment



Addressing the challenges

- **Clear messaging** on the role of animals and the importance of managing animal health and welfare
- Demonstrating how **core veterinary services activity achieve economic, social, food security and environment goals**
 - Sustainable Development Goals and need for One Health approaches
- This can be achieved through the agile use of data to generate **credible information** on the social, economic and environmental burdens of animal diseases

What motivates the GBADs programme?

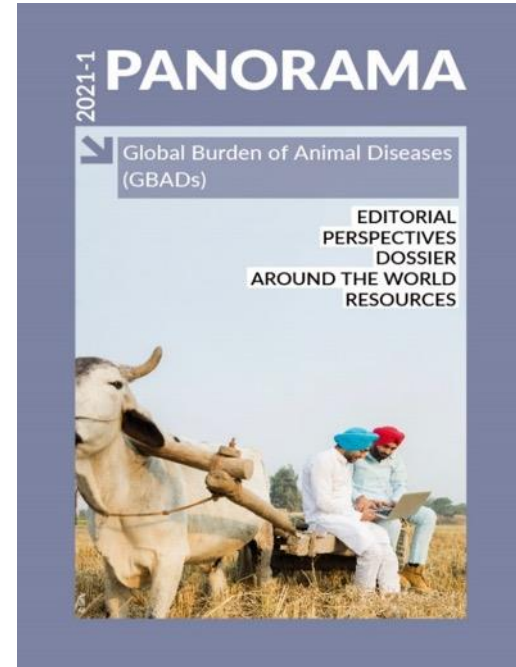
Our livestock keepers, consumers and the environment need:

- **Investment plans** which ensure there are adequate animal health systems
- **Allocation of resources** to problems that most affect their health and wellbeing
- **Evaluation** of animal health investments to ensure they are delivering on societal outcomes

For your information

The OIE Panorama on GBADs has been published.

- https://oiebulletin.com/?page_id=150
- https://oiebulletin.com/?page_id=373&lang=fr
- https://oiebulletin.com/?page_id=381&lang=es



Thanks to Ben Huntington for editing this document

For your information

Rev. Sci. Tech. Off. Int. Epiz., 2021, 40 (2), 567-584

Global Burden of Animal Diseases: a novel approach to understanding and managing disease in livestock and aquaculture

B. Huntington^(1,2), T.M. Bernardo⁽³⁾, M. Bondad-Reantaso⁽⁴⁾, M. Bruce⁽⁵⁾, B. Devleeschauwer^(6,7), W. Gilbert⁽¹⁾, D. Grace^(8,9), A. Havelaar⁽¹⁰⁾, M. Herrero⁽¹¹⁾, T.L. Marsh⁽¹²⁾, S. Mesenhowski⁽¹³⁾, D. Pendell⁽¹⁴⁾, D. Pigott⁽¹⁵⁾, A.P. Shaw^(1,16), D. Stacey⁽¹⁷⁾, M. Stone⁽¹⁸⁾, P. Torgerson⁽¹⁹⁾, K. Watkins⁽²⁰⁾, B. Wieland⁽²¹⁾ & J. Rushton^{(1)*}

<https://www.oie.int/app/uploads/2021/05/402-18-huntington-rushton.pdf>

<https://animalhealthmetrics.org>

THE LANCET

Log in

COMMENT | VOLUME 392, ISSUE 10147, P538-540, AUGUST 18, 2018

Initiation of Global Burden of Animal Diseases Programme

Jonathan Rushton  • Mieghan Bruce • Camille Bellet • Paul Torgerson • Alexandra Shaw • Tom Marsh • et al.

[Show all authors](#)


Published: August 18, 2018 • DOI: [https://doi.org/10.1016/S0140-6736\(18\)31472-7](https://doi.org/10.1016/S0140-6736(18)31472-7) •  Check for updates


THE LANCET

Log in

COMMENT | VOLUME 397, ISSUE 10279, P1045-1046, MARCH 20, 2021

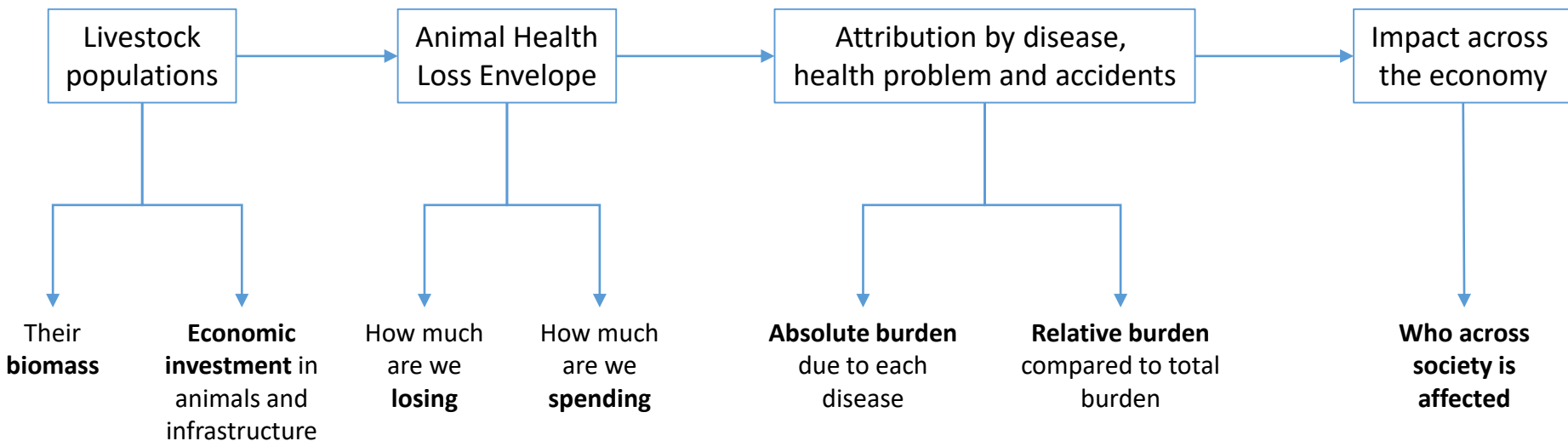
Roll-out of the Global Burden of Animal Diseases programme

J Rushton  • B Huntington • W Gilbert • M Herrero • P R Torgerson • A P M Shaw • et al. [Show all authors](#)

Published: February 04, 2021 • DOI: [https://doi.org/10.1016/S0140-6736\(21\)00189-6](https://doi.org/10.1016/S0140-6736(21)00189-6) •  Check for updates

GBADS

GBADs - Analytical structure



Rushton et al 2021

Data Source

FAOSTAT

Parameters for Dataframe

Select country:

United Kingdom of Great Britain and Northern Ireland

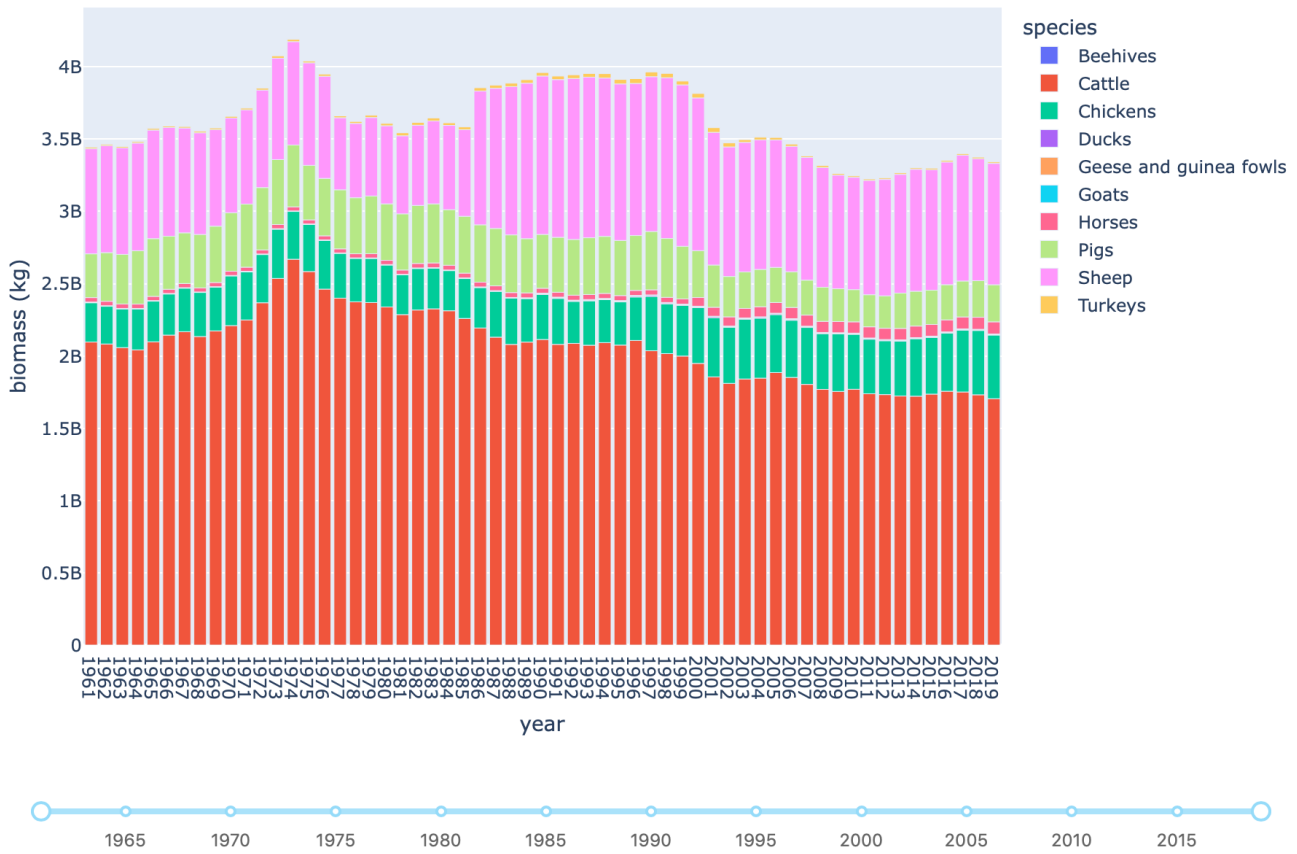
Select species:

Asses, Beehives, Buffaloes, Camelids, other, Camels, Cattle, Chickens, Ducks, Geese and guinea fowls, Goats, Horses, Mules

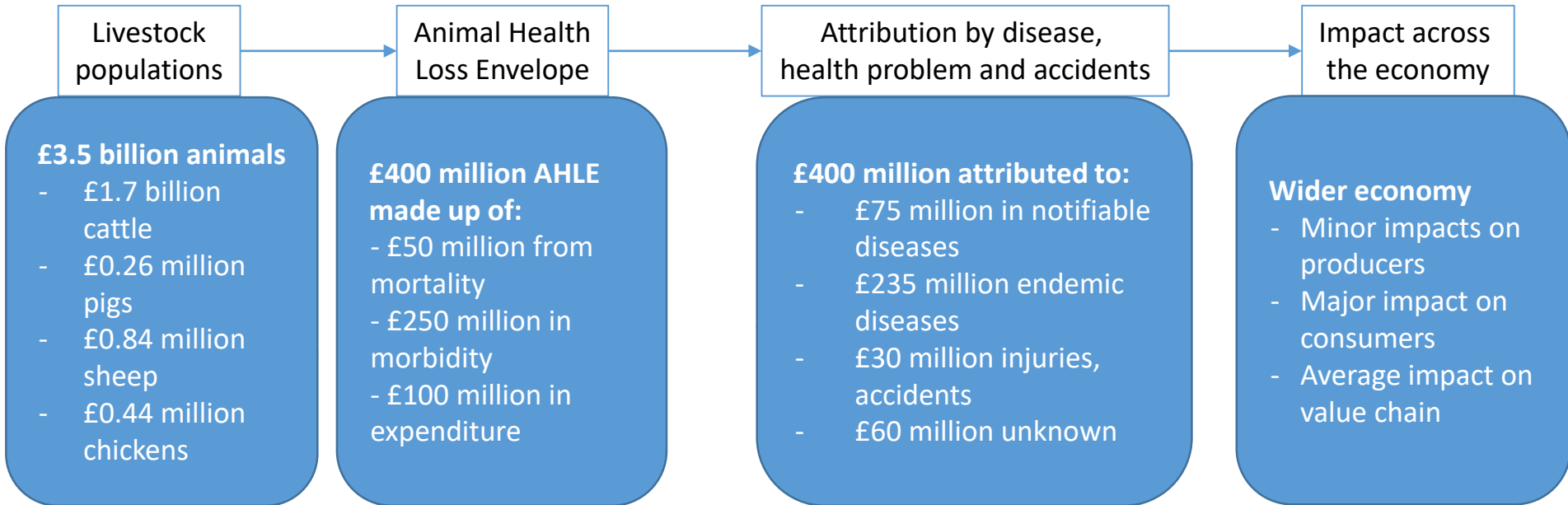
Playground

Map

Metadata

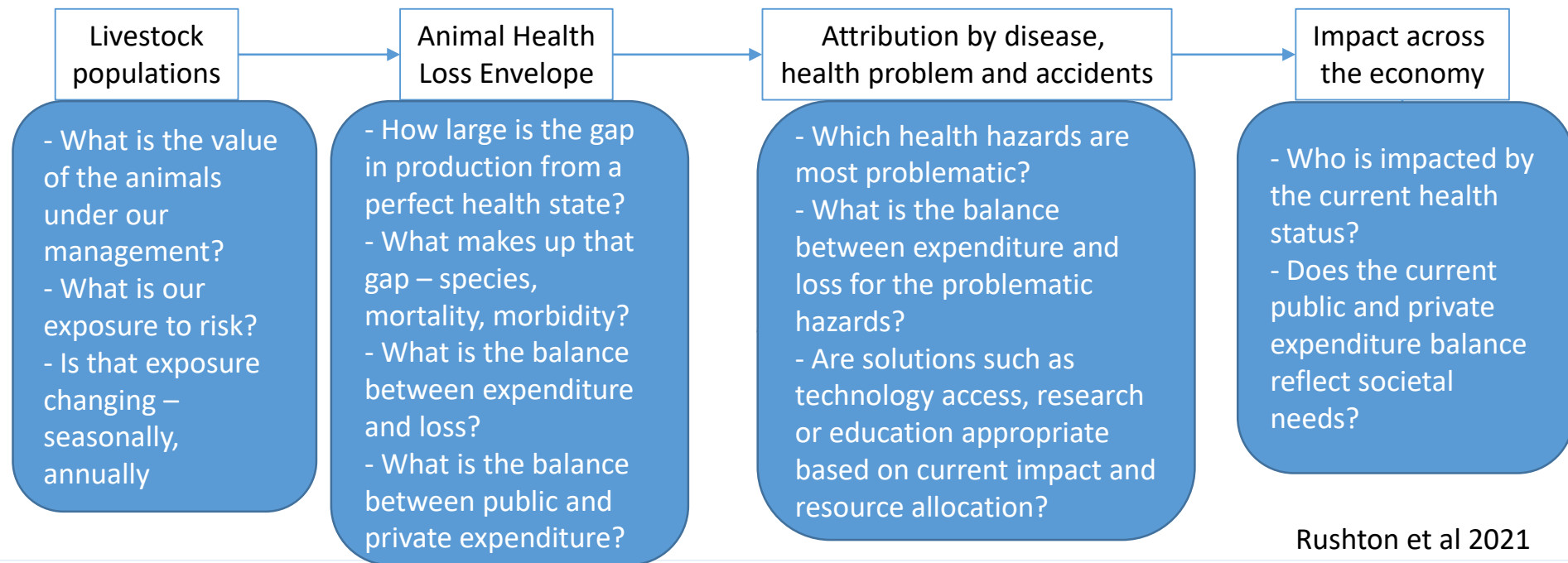


GBADs - Analytical structure – illustrative figures

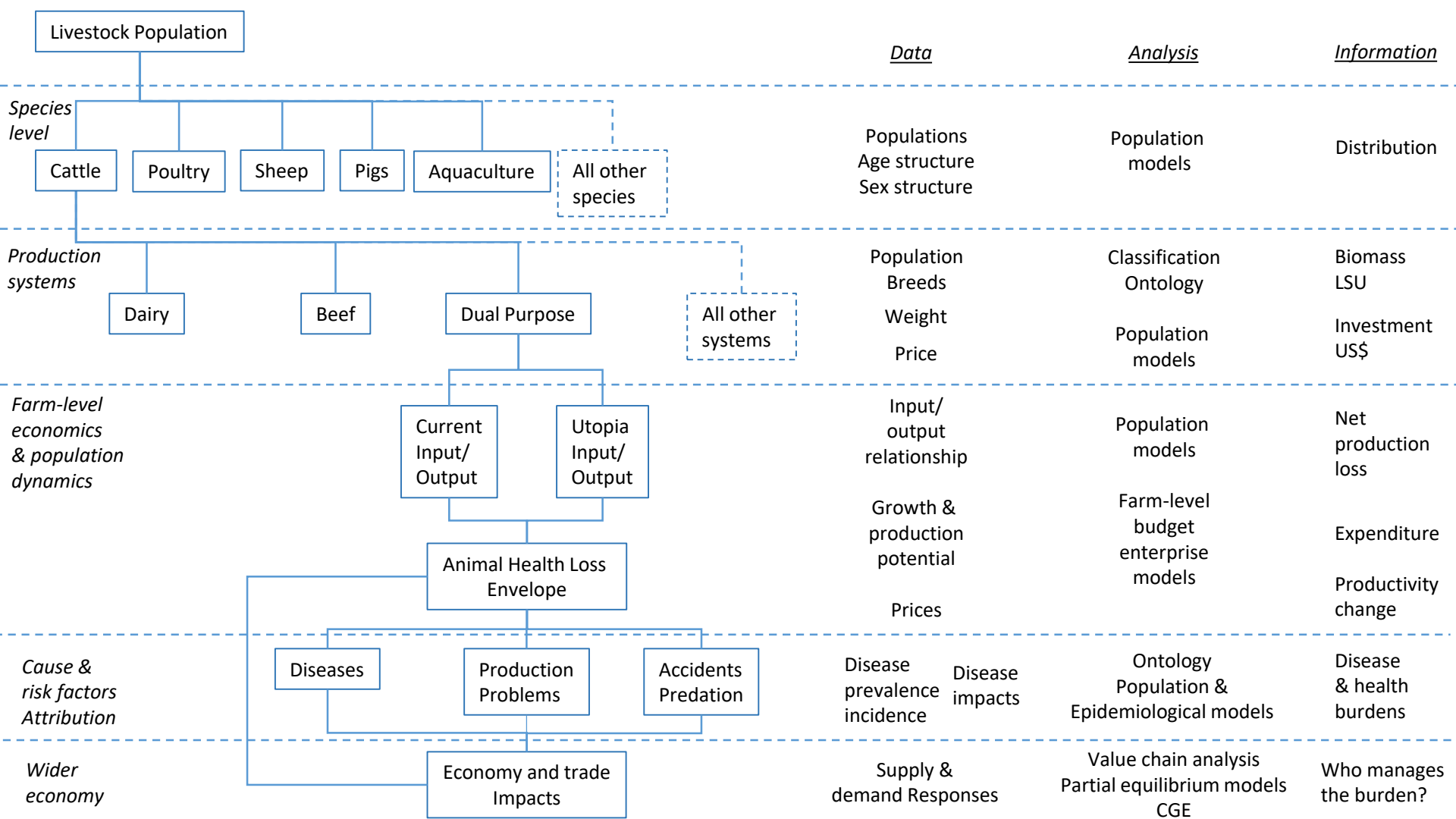


Rushton et al 2021

GBADs - Analytical structure



Rushton et al 2021



GBADs Legacy

<https://animalhealthmetrics.org>

<https://animalhealthmetrics.org>

GBADs

GBADs

GBADs – the legacy of estimating burdens

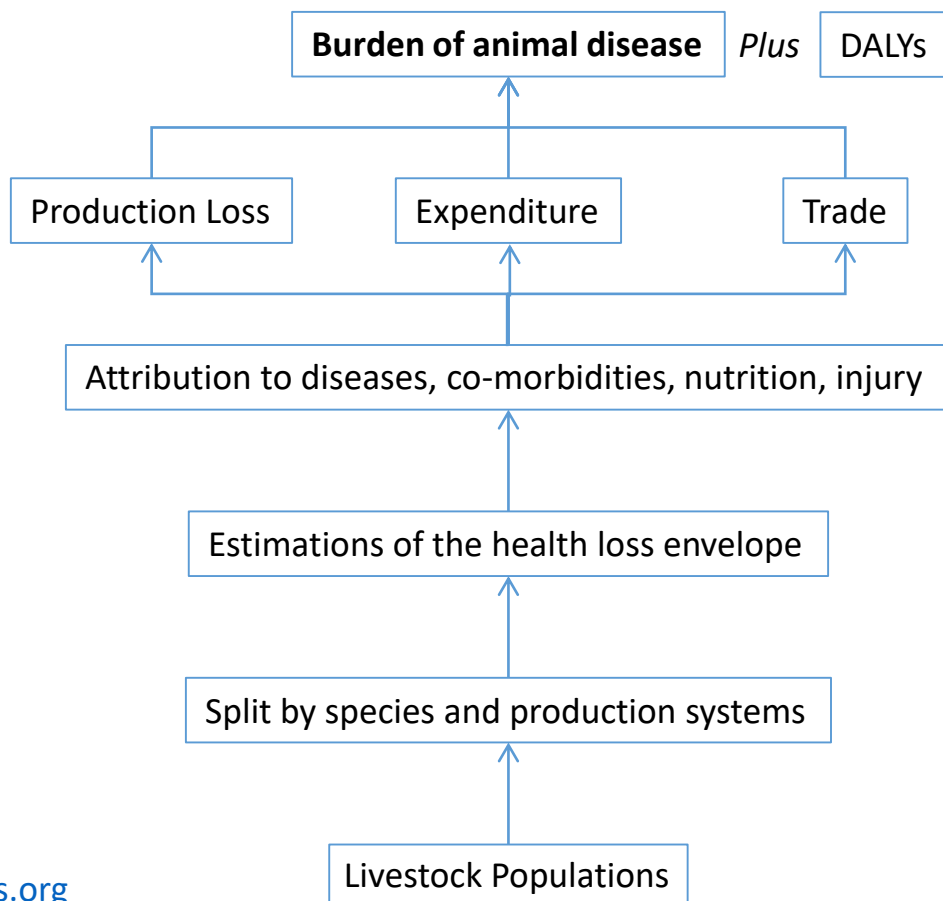
Methods & Capacity

Institutionalisation
of GBADs
methods

Tools for
prioritisation

Educational
materials

Codes of best
Practice



Information

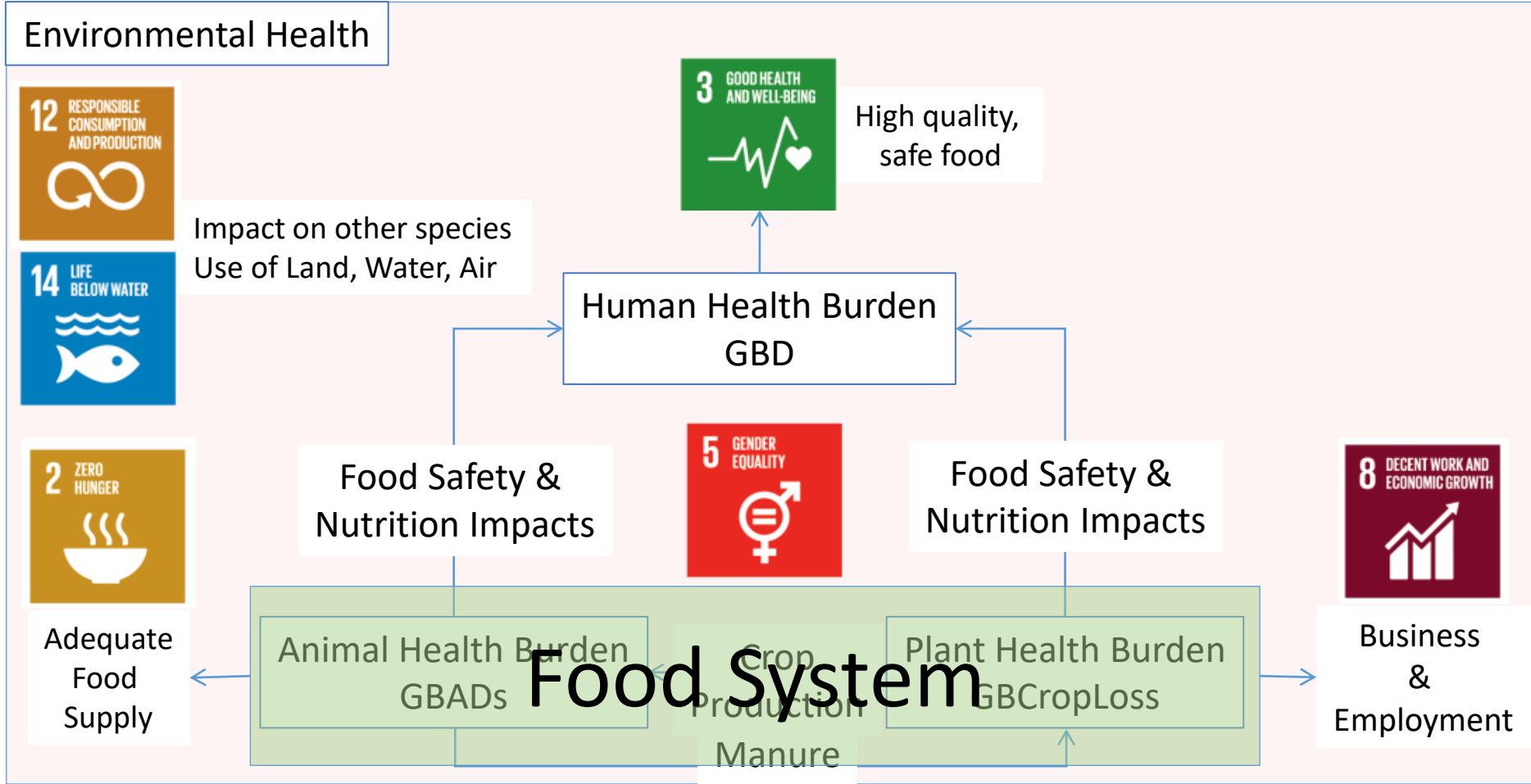
Impacts that can be
compared between
countries and food
systems

Health losses by disease
and by people affected

Distribution of livestock
losses by species,
systems, geographies

Distribution of livestock
by biomass, capital
value

GBADs and One Health



Global Burden of Animal Diseases programme will:

- Provide information for **evidence based investment plans** animal health systems - supporting PVS and Gap Analysis
- **Allow allocation of resources** to key social, economic and environmental problems - strengthening PVS outcomes
- **Support high quality evaluation** of existing animal health investments demonstrating the value of animal health systems

GBADs funders, partners, collaborators



BILL & MELINDA
GATES foundation



UNIVERSITY
of GUELPH

